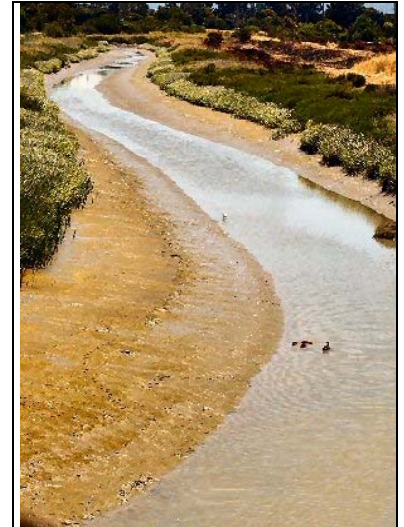


DESCRIPTION

The San Francisquito Creek Watershed is approximately 42 square miles, extending from Skyline Boulevard at the top of the Santa Cruz Mountains to the San Francisco Bay. The watershed includes public lands and numerous private landowners in the cities of East Palo Alto, Menlo Park, Palo Alto, Portola Valley and Woodside, unincorporated land areas of San Mateo and Santa Clara counties, and Stanford University. San Francisquito Creek and Los Trancos (a large tributary) represent the boundary between the two stated counties. Stanford University is the largest landowner in the watershed owning over 8,000 acres in both counties.

Riparian flora and fauna include threatened species such as the Red-legged frog, Western pond turtle, and the most viable remaining native steelhead population in the South San Francisco Bay. Bear Creek and Los Trancos Creek and their respective tributaries support an observable steelhead population that is threatened by the affects of urbanization. Sediment loads and erosion are of special concern throughout the watershed. This includes large slides along Alpine Road, filling of Searsville Dam, and bank erosions along the lower reaches.



San Francisquito Creek

(Photo courtesy John Todd, City of Palo Alto

<http://www.cityofpaloalto.org/jpa/index.html>).

REASON FOR CCA IDENTIFICATION

San Francisquito Creek is a 2002 303(d)-listed **impaired waterbody that is adjacent to a Wildlife Refuge** (the Don Edwards San Francisco Bay National Wildlife Refuge).

POLLUTED RUNOFF CONDITIONS

	Top 5 Runoff Pollutants of Concern					Efforts to Address Pollutants (See next page)
	2002 303(d)-Listed Pollutants TMDL Priority (& Proposed Completion if available)		Other Pollutants of Concern			
Selected Coastal Zone Waterbodies	<u>Diazinon</u>	<u>Sediment</u>	?	?	?	
San Francisquito Creek ▲	▲ High (2004)	▲ Medium				
Potential Sources of Pollutants in Coastal Waterbodies						
Agriculture						
Forestry (Silviculture)						
Urban Areas						a, b, c, d, g
➤ Urban Runoff/ Storm Sewers	▲					
Marinas & Boating						
Hydromodification						
Wetlands & Riparian Areas						a, b, f, h
Unspecified Nonpoint Source		▲				a, b, e, g, h

San Francisquito Creek CCA

MAJOR EFFORTS TO IMPLEMENT NPS MANAGEMENT MEASURES

a)	Friends of San Francisquito Creek		http://www.acterra.org/watershed/index.html
	San Francisquito Watershed Council	Pam Sturner	(650) 962-9876 PamS@Acterra.org
	➤ The San Francisquito Watershed Council works to improve water quality, preserve and restore wildlife habitat, and reduce flood dangers along San Francisquito Creek and its tributaries.		
b)	San Francisquito Creek Urban Watershed Protection and Restoration Project		http://www.acterra.org/watershed/contact.html
	San Francisquito Watershed Council	Pam Sturner	(650) 962-9876 PamS@Acterra.org
	➤ The San Francisquito Watershed Council works to improve water quality, preserve and restore wildlife habitat, and reduce flood dangers along San Francisquito Creek and its tributaries.		
c)	San Francisquito Creek Joint Powers Authority		http://www.cityofpaloalto.org/jpa/
		Cynthia D'Agosta	(650) 330-6765 sfcreekjpa@menlopark.org ckdagosta@menlopark.org
	➤ To address community concerns regarding flooding and environmental preservation on San Francisquito Creek, the City of Palo Alto and neighboring jurisdictions created the San Francisquito Creek Joint Powers Authority.		
d)	Watershed Monitoring and Assessment Network for San Pedro and San Francisquito Creeks		http://www.pedrocreek.org/
	San Pedro Creek Watershed Coalition		pedro@hax.com
	➤ To conduct specific analysis of the creek watershed that will be used to develop a Sediment Reduction Plan that prioritizes erosion control and sediment reduction measures to be implemented throughout the watershed.		
e)	Guide to San Francisco Bay Area Creeks		http://www.museumca.org/creeks/46-RescSFFrancisquito.html
	Oakland Museum		(510) 238-2200
	➤ Information resources.		
f)	San Francisquito Creek Bank Stabilization And Revegetation Master Plan (2000)		http://www.cityofpaloalto.org/sfcreek/
	San Francisquito Creek Joint Powers Authority	Cynthia D'Agosta	(650) 330-6765 sfcreekjpa@menlopark.org
	➤ Documents existing conditions, including creek bank stability and vegetation, and recommends bank restoration and revegetation techniques for specific sections of the creek; covers 6.5-mile stretch of creek.		
g)	San Francisquito Creek Watershed Analysis and Sediment Reduction Plan (2004)		http://www.cityofpaloalto.org/public-works/jpa-references.html
	San Francisquito Creek Joint Powers Authority	Cynthia D'Agosta	(650) 330-6765 sfcreekjpa@menlopark.org
	➤ Plan to assess and implement sediment management measures in the watershed, focusing on human-related activities that modify hydrology, alter erosion rates, or trap sediment; recommendation of management measures.		
h)	San Francisquito Creek Aquatic Habitat Assessment and Limiting Factors Analysis (October 2004)		http://www.cityofpaloalto.org/jpa/references.html
	San Francisquito Creek Joint Powers Authority	Cynthia D'Agosta	(650) 330-6765 sfcreekjpa@menlopark.org
	➤ Characterizes channel and habitat conditions with respect to factors that limit the steelhead population in the San Francisquito Creek watershed. Involved direct data collection and analysis and studies that have already been performed		

San Francisquito Creek CCA

REGULATORY/PLANNING JURISDICTIONS

➤ City of Palo Alto, Planning Dept.	http://www.cityofpaloalto.org/government/planning/	Steve Emslie	(650) 329-2441	plandiv.info@cityofpaloalto.org
➤ City of East Palo Alto, Planning Division	http://www.ci.east-palo-alto.ca.us/publicworks/index.html	Maria Banico	(650) 853-3121	mabanico@cityofepa.org
➤ San Mateo Countywide Stormwater Pollution Prevention Program	http://stoppp.tripod.com/	Bob Davidson	(650) 363-4305	Bobdavidson1@yahoo.com
➤ San Mateo County, Environmental Services Agency	http://www.co.sanmateo.ca.us/smc/department/home/0..55577715558929_10764316.0.html	Jim Eggemeyer	(650) 363-1930	jeggemeyer@co.sanmateo.ca.us
➤ Santa Clara County, Planning Dept.	http://www.sccplanning.org/planning/	Mike Lopez	(408) 299-5771	michael.lopez@pln.sccgov.org
➤ Santa Clara Valley Urban Runoff Pollution Prevention Program	http://www.scvurppp-w2k.com/default.htm	Jill Bicknell	(800) 794-2482	jcbicknell@eoainc.com
➤ San Francisco Bay Conservation and Development Commission	http://www.bcdc.ca.gov	Lindy Lowe	(415) 352-3642	lindyl@bcdc.ca.gov
➤ Calif. Coastal Commission, Water Quality Unit	http://www.coastal.ca.gov/nps/npsndx.html	Lisa Sniderman	(415) 904-5270	lsniderman@coastal.ca.gov
➤ San Francisco Bay Regional Water Quality Control Board	http://www.waterboards.ca.gov/sanfranciscobay/	Sandi Potter	(510) 622-2426	spotter@waterboards.ca.gov
➤ State Water Resources Control Board	http://www.waterboards.ca.gov/	Heidi Hall	(916) 323-2871	hhall@waterboards.ca.gov
➤ California Coastal Conservancy	http://www.coastalconservancy.ca.gov/	Terri Nevins	(510) 286-4161	tnevins@scc.ca.gov
➤ Calif. Dept. of Fish & Game, Region 3	http://www.dfg.ca.gov/	Bill Cox	(707) 944-5500	bcox@dfg.ca.gov
➤ San Mateo County Agricultural Commissioner	www.co.sanmateo.ca.us/agwm	Gail Raabe	(650) 363-4700	smateoag@co.sanmateo.ca.us