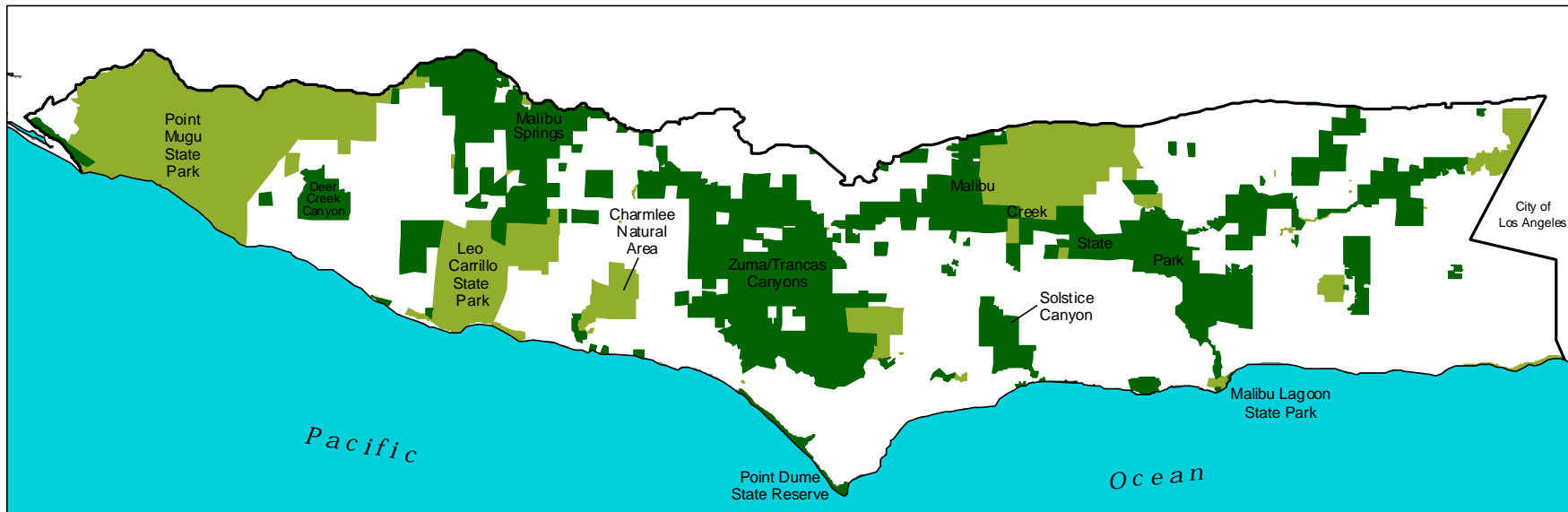
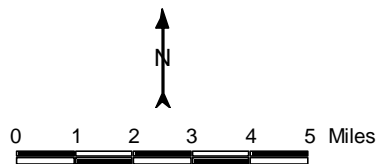


Regional Cumulative Assessment Project:
 Santa Monica Mountains/Malibu Area
 1998

Public Recreation Acquisitions from 1979 to 1997



- Public recreation lands acquired between 1979 and 1997
- Public recreation lands acquired prior to 1979
- ReCAP Study Area Boundary



Map Note: The information presented on this map is subject to revision. All locations are approximate and data have not been field checked. Attempts have been made to ensure completeness of the data, nevertheless, inaccuracies may exist.

Sources: Santa Monica Mountains Comprehensive Plan, 1979. Land Protection Plan within the Santa Monica Mountains National Recreation Area, 1997 digital map, NPS.

