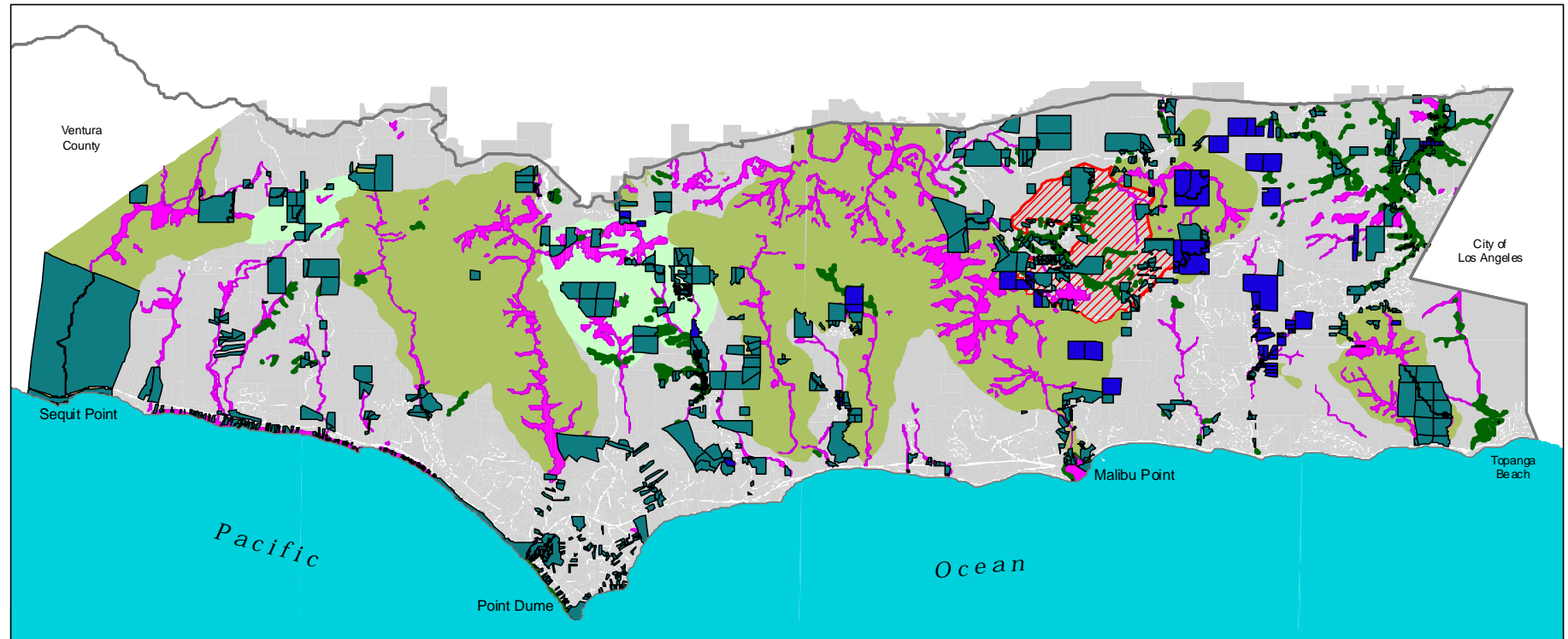


Figure 3-6

Regional Cumulative Assessment Project:
Santa Monica Mountains/Malibu Area
1998

Approved Development and Retired Lots in Sensitive Resource Areas within L.A. County 1978-1996



- Parcels with approved development and within sensitive resource areas
- Retired lots within sensitive resource areas
- Coldcreek management area
- ESHA
- Significant oak woodlands and savannas
- Significant watersheds
- Wildlife migration corridor
- ReCAP Study Area Boundary

While entire parcels are shaded for illustrative purposes, in most cases, the sensitive resource area covers only a portion of the parcel.



California Coastal Commission
ReCAP & Technical Services Division



0 1 2 3 4 5 Miles

Map Note: The information presented on this map is subject to revision. All locations are approximate and data have not been field checked. Attempts have been made to ensure completeness of the data, nevertheless, inaccuracies may exist. Sources: L.A. County LUP, 1986; CCC TDC Database. TNP, SES, ACH, Revised 8/99