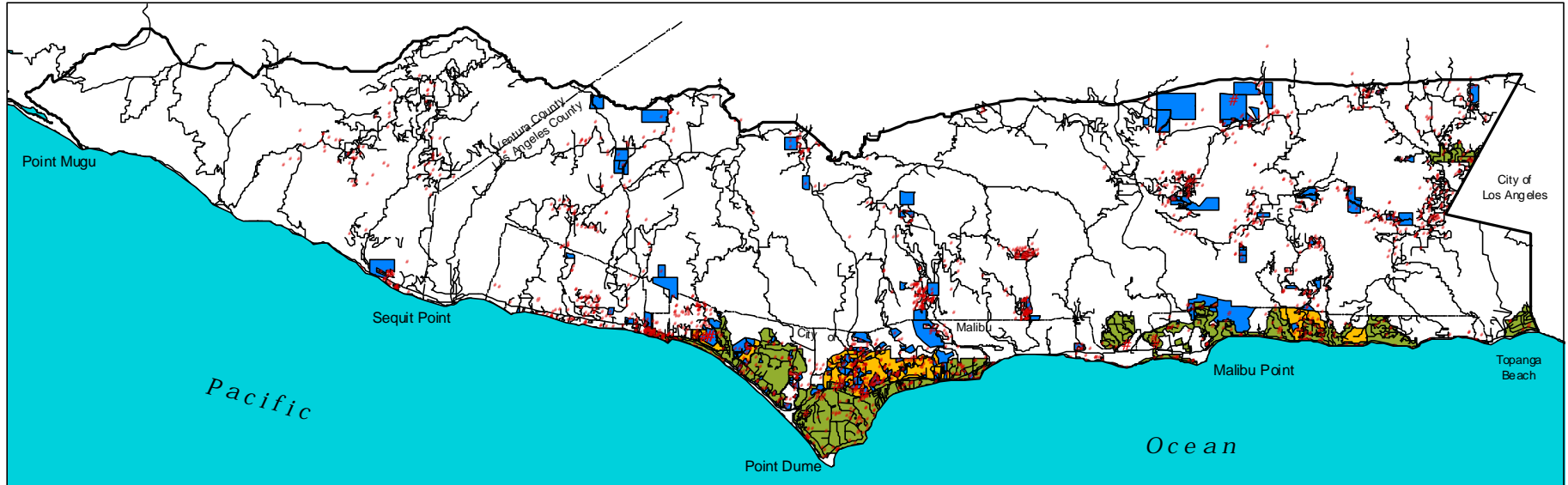


Regional Cumulative Assessment Project:  
 Santa Monica Mountains/Malibu Area  
 1998

New Development Approved in the Santa Monica Mountains Coastal Zone  
 1978-1996

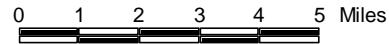
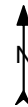


New Residential Units  
 per Development Permit

- 1 - 2 units
- 3 - 10 units
- # 11 - 25 units
- # 26 - 50 units
- # >50 units

- Approved Subdivisions
- Existing Developed Areas
- Potential Expansion to EDAs

- ReCAP Study Area Boundary
- Roads
- Malibu City Boundary
- Los Angeles/Ventura County Boundary



Map Note: The information presented on this map is subject to revision. All locations are approximate and data have not been field checked. Attempts have been made to ensure completeness of the data, nevertheless, inaccuracies may exist.

Sources: EDAs and Potential Expansion Areas from District Interpretive Guidelines, Malibu - Santa Monica Mountains, California Coastal Commission, 1981. Subdivisions and new homes from ReCAP Permit Database, 1998.



California Coastal Commission  
 ReCAP & Technical Services Division